

2023 Welcome to Invest in TAIWAN



Feb 2023

Most Reliable and Innovative Partner in Asia

<https://investtaiwan.nat.gov.tw>

Presentation Outline



Why Taiwan



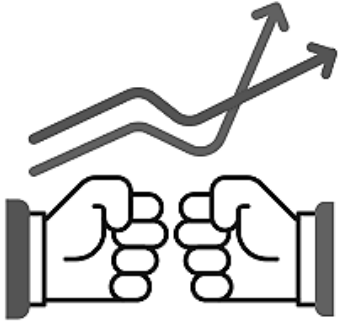
**Investment
In Taiwan**



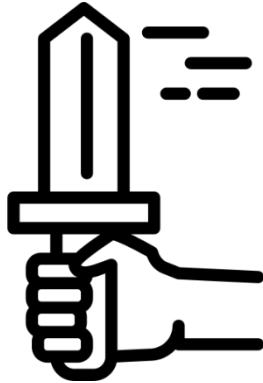
**Investment
Services**

The Only Constant is Change

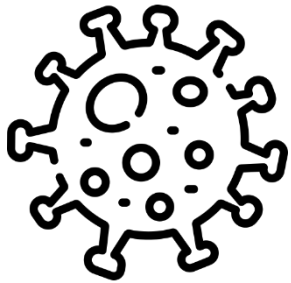
● Trade War



● War



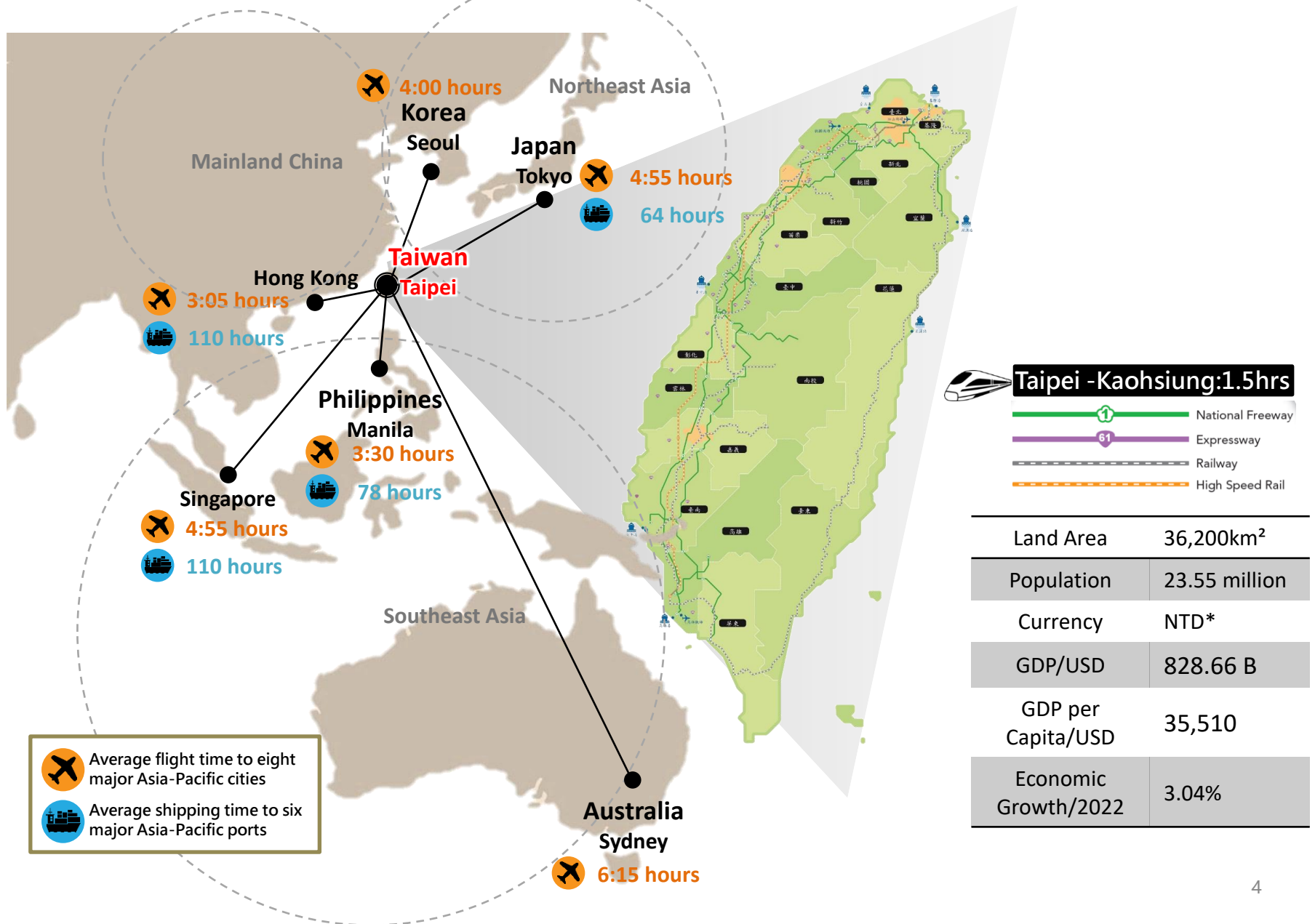
● Covid-19



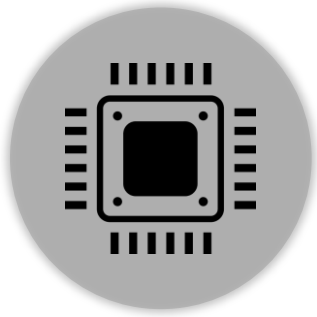
● Natural disaster



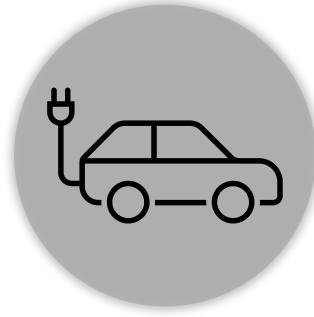
An Asia-Pacific Hub: TAIWAN



Focus on Innovative Industries



Semiconductors



**Next-Generation
Vehicle**



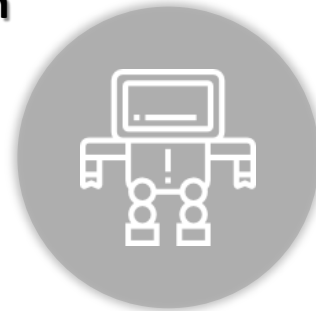
**Agricultural
Modernization**



Asia Silicon Valley



**National Defense
Industry**



Smart Machinery



**Green Energy
Technology**



Biomedicine



Circular Economy

Taiwan's New Value • New Position

Innovation, Trust, Safety



Secure IP Protection



Comprehensive regulatory system: The "Commercial Case Adjudication Act" and "Intellectual Property and Commercial Court Organization Act" became effective on July 1, 2021. Professional judges and investigators are appointed to increase the efficiency in processing commercial cases.

Establishment of Patent Prosecution Highway (PPH) with multiple countries: Taiwan has signed PPH agreements with countries including the United States, Japan, South Korea, Poland, and Spain to speed up the review of patent cases.

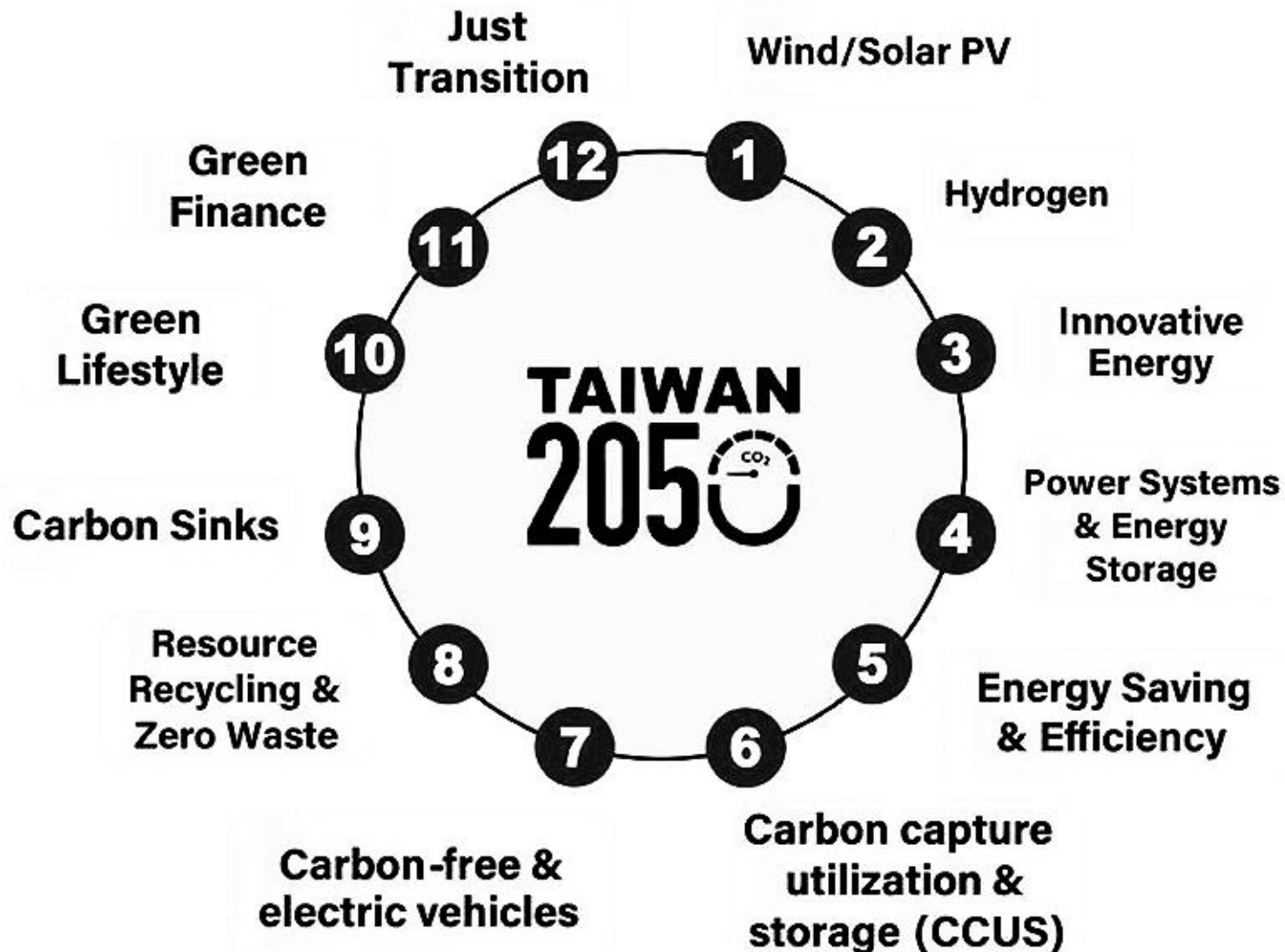
Establishment of the Intellectual Property and Commercial Court

Establishment of the Intellectual Property Rights Police Team

Economic freedom recognized by the international community: The aforementioned measures are recognized by the international community. According to the "2021 Index of Economic Freedom" published by the U.S. Heritage Foundation, Taiwan **ranked 6th** among the 184 economies around the world.



2050 Net-Zero Transition



Business Confidence Survey

- From German Trade Office Taipei

Business Confidence Survey 2021/2022 Results

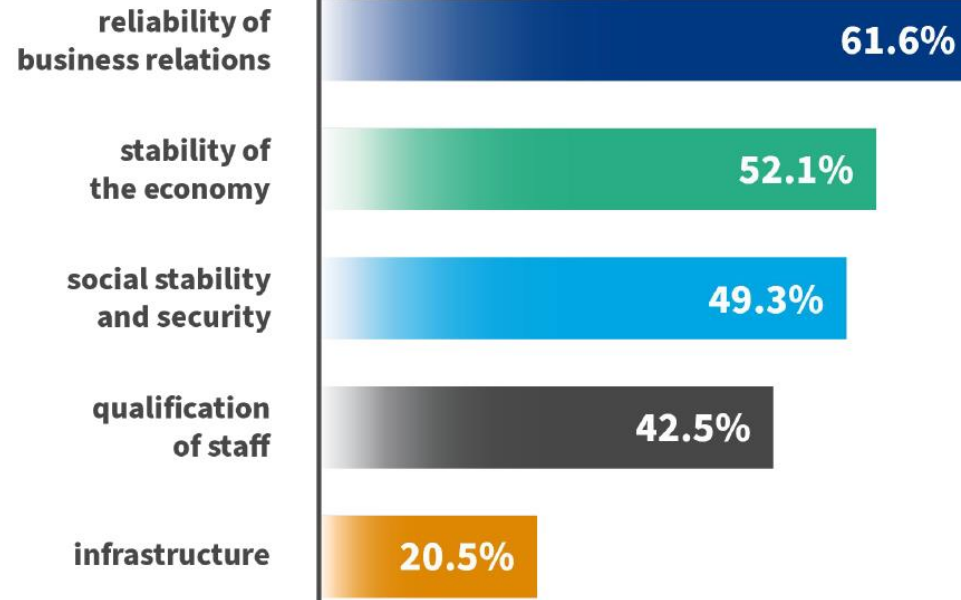
Presence in Taiwan

Stepping-Stone:

43%

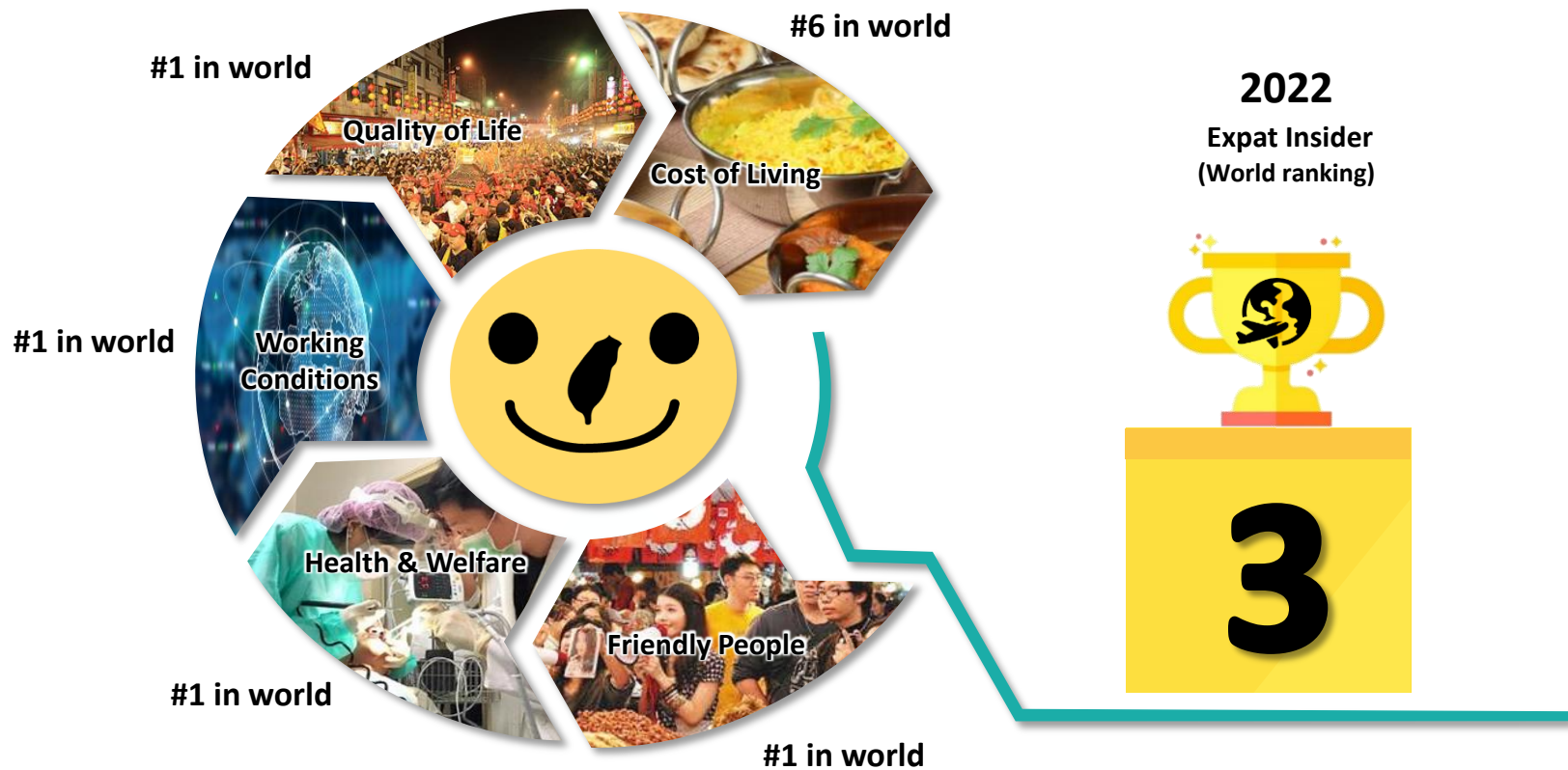
consider Taiwan as an important stepping-stone to other Asian markets

Most Valued Aspects:



Friendly Living Environment

#2 in Asia, #3 in the world (Expatriate Insider 2022)



Source: Inter Nations(2021), "Expatriate Insider 2021"



TOURIST
i
INFORMATION

InvesTaiwan

InvesTaiwan
Service Center
(ITSC)

Investment
Commission
(IC, MOEA)

Department of
Investment Services
(DOIS , MOEA)

◆ Foreign Investor Support Division

- ◆ Small and Medium Enterprise Support Division
- ◆ 3-Major InvesTaiwan Programs Support Division
- ◆ 3-Major InvesTaiwan Programs Review Division
- ◆ Talents Support Division
- ◆ Administrative Division

◆ Consulting

- Taiwan Economic Environment
- Policies
- Regulations.....etc.

◆ Matching

- Real Properties
- Suppliers
- Talentsetc.

◆ Net Working

- Authority Offices
- Local Government
- Utilities
- Business Unions

Bravo Taiwan!



Taiwan Gold Card

A combined open work permit, residence permit and visa for skilled professionals

ONLINE APPLICATION

1. REGISTRATION
2. FILL IN INFORMATION
3. UPLOAD DOCUMENTS
4. PAYMENT & E-MAIL CONFIRMATION

QUALIFICATION REVIEW

INFORMATION CHECK



NATIONAL IMMIGRATION AGENCY

QUALIFICATION CHECK



WDA, MINISTRY OF LABOR & RELEVANT MINISTRIES

During this stage, the applicant may need to submit additional documents, resubmit their application, or their application may be rejected.

IDENTITY VERIFICATION

PASSPORT INSPECTION



TAIPEI ECONOMIC & CULTURAL OFFICE

Passport Inspection is required for all overseas foreign applicants (except for applicants of Macao/Hong Kong nationality).

SECONDARY REVIEW



NATIONAL IMMIGRATION AGENCY

PICK UP GOLD CARD

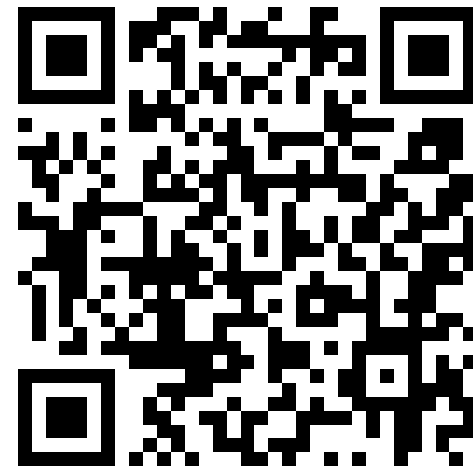
Please bring the following to your chosen National Immigration Service Station to pick up your Gold Card:

1. Original Passport
2. Application Receipt
3. Other Relevant Documents (i.e. Resident Authorization Certificate for overseas applicants)



Online Application

<https://goldcard.nat.gov.tw/en/apply/step-1/#/>



Taiwan Work Permit for Foreigners

7 Types



A. Specialized or Technical Works

(Engineering / Architecture/ Manufacturing...etc)



B. The Director or Manager of an Approved Business Invested or Established by Overseas Chinese or Foreigner(s)



C. School teacher



D. Full-time Foreign Teacher in Cram School



E. Sports Coaching or Athlete



F. Arts and Performing Arts

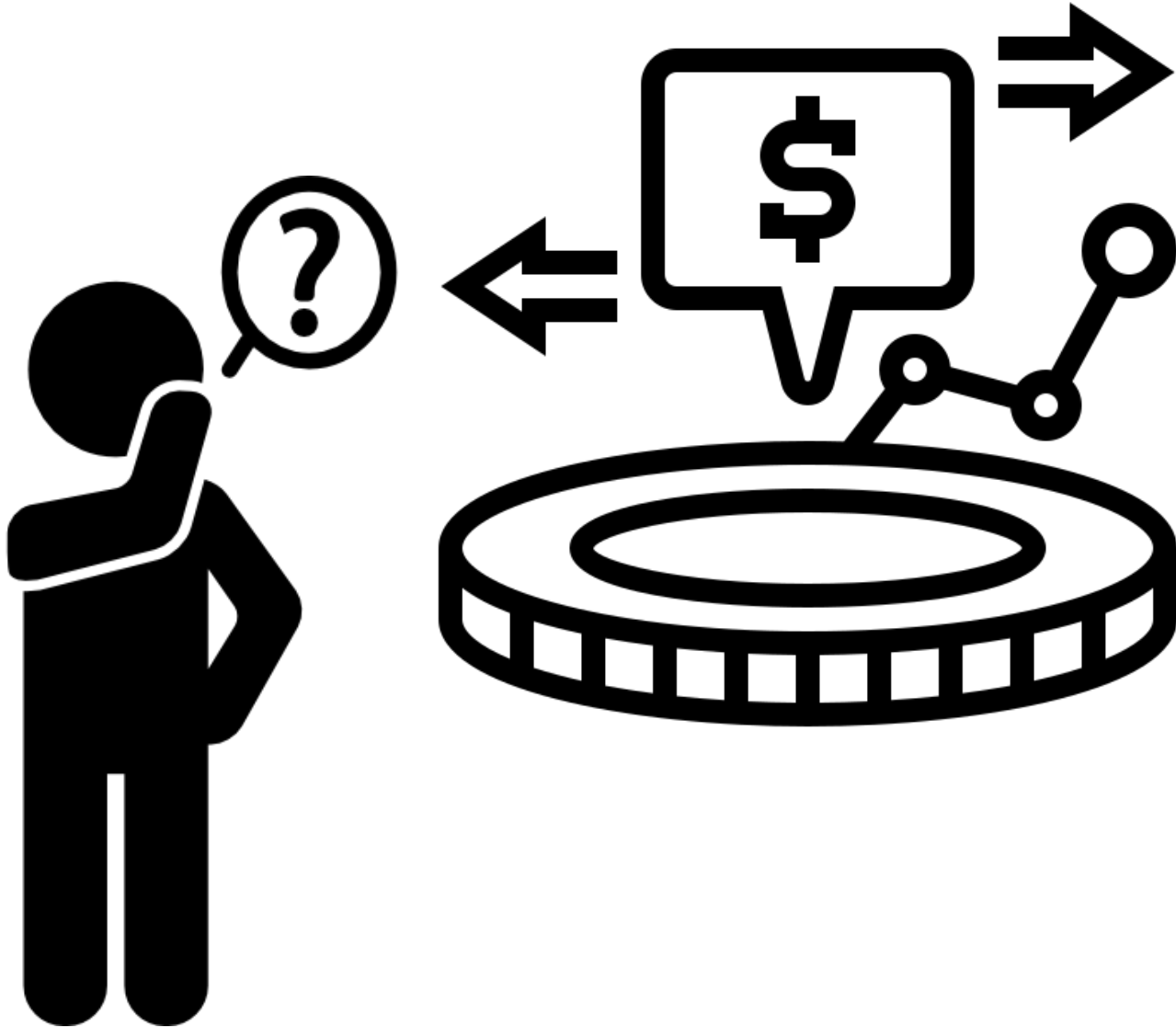


G. Contracting Foreigners



Details
Workforce Development Agency

Investment Trend



Thank you!



InvestTaiwan

Tel: +886-2-2311-2031

8F., No.1, Xiangyang Rd., Zhongzheng Dist., Taipei City 10046,

<http://investtaiwan.nat.gov.tw>